



Storytimes

Foothills Library

Tuesdays: Baby Rhyme and Playtime, 10 AM

Toddler Time, 11 AM

Thursdays: Preschool Storytime, 10:30 AM

Heroes Regional Park Library

Fridays: Baby & Toddler Storytime, 10 AM

Preschool Storytime, 11 AM

Main Library

Tuesdays: Familytime, 10:30 AM

Thursdays: Baby and Toddler Time,
10:30 & 11:15 AM

Velma Teague Library

Wednesdays: Preschool Storytime, 10:30 AM

Baby and Toddler Time, 11 AM



Storytimes

Foothills Library

Tuesdays: Baby Rhyme and Playtime, 10 AM

Toddler Time, 11 AM

Thursdays: Preschool Storytime, 10:30 AM

Heroes Regional Park Library

Fridays: Baby & Toddler Storytime, 10 AM

Preschool Storytime, 11 AM

Main Library

Tuesdays: Familytime, 10:30 AM

Thursdays: Baby and Toddler Time,
10:30 & 11:15 AM

Velma Teague Library

Wednesdays: Preschool Storytime, 10:30 AM

Baby and Toddler Time, 11 AM

Baby & Toddler Time. Planned for children ages 0 to 3 years with a parent/caregiver. Join us in reading simple books, singing fun songs, & enjoying imaginative fingerplays!

- **Velma Teague Library, Wednesdays, 11 AM**
- **Main Library, Thursdays, 10:30 & 11:15 AM**
- **Heroes Regional Park Library, Fridays, 10 AM**

Baby Rhyme and Playtime. An early literacy program for parent/caregiver and baby, newborn to 18 months. This weekly program includes stories, rhymes, songs and movement with time to engage in guided play and visiting.

- **Foothills Library, Tuesdays, 10 AM**

Familytime. Join us for a traditional storytime with stories, fingerplays, songs and more. Children of all ages are welcome to attend, but those under three must be accompanied by an adult. Stories are typically geared to ages 2½ to 5.

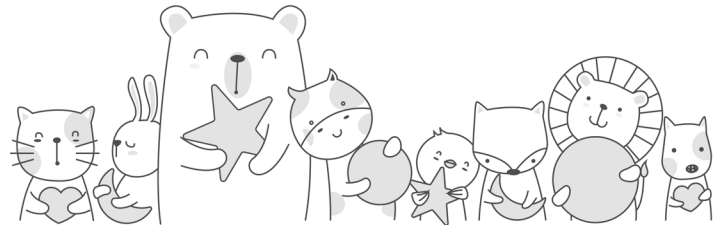
- **Main Library, Tuesdays, 10:30 AM**

Preschool Storytime. A story and song time for preschoolers aged 3 to 5 and their grownups! This early literacy program features a blend of stories and information, as well as music, on a new theme each week.

- **Velma Teague Library, Wednesdays, 10:30 AM**
- **Foothills Library, Thursdays, 10:30 AM**
- **Heroes Regional Park Library, Fridays, 11 AM**

Toddler Time. Toddlers and their grownups are invited to rhyme, read, and sing. Each week this interactive program will feature stories and puppets geared especially for children 18 months - 3 years.

- **Foothills Library, Tuesdays, 11 AM**



Glendale www.glendaleazlibrary.com • **623-930-3600**
ARIZONA

Glendale Public Library is a division of the City of Glendale Community Services Department.

Baby & Toddler Time. Planned for children ages 0 to 3 years with a parent/caregiver. Join us in reading simple books, singing fun songs, & enjoying imaginative fingerplays!

- **Velma Teague Library, Wednesdays, 11 AM**
- **Main Library, Thursdays, 10:30 & 11:15 AM**
- **Heroes Regional Park Library, Fridays, 10 AM**

Baby Rhyme and Playtime. An early literacy program for parent/caregiver and baby, newborn to 18 months. This weekly program includes stories, rhymes, songs and movement with time to engage in guided play and visiting.

- **Foothills Library, Tuesdays, 10 AM**

Familytime. Join us for a traditional storytime with stories, fingerplays, songs and more. Children of all ages are welcome to attend, but those under three must be accompanied by an adult. Stories are typically geared to ages 2½ to 5.

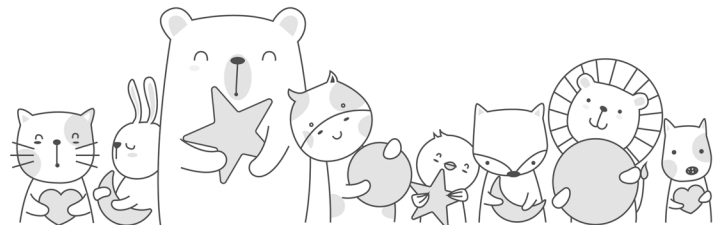
- **Main Library, Tuesdays, 10:30 AM**

Preschool Storytime. A story and song time for preschoolers aged 3 to 5 and their grownups! This early literacy program features a blend of stories and information, as well as music, on a new theme each week.

- **Velma Teague Library, Wednesdays, 10:30 AM**
- **Foothills Library, Thursdays, 10:30 AM**
- **Heroes Regional Park Library, Fridays, 11 AM**

Toddler Time. Toddlers and their grownups are invited to rhyme, read, and sing. Each week this interactive program will feature stories and puppets geared especially for children 18 months - 3 years.

- **Foothills Library, Tuesdays, 11 AM**



Glendale www.glendaleazlibrary.com • **623-930-3600**
ARIZONA

Glendale Public Library is a division of the City of Glendale Community Services Department.